



## Vales Point Power Station Monthly Environmental Data Summary

LICENCE NO	761	<a href="http://www.epa.nsw.gov.au/prpoeoapp/">http://www.epa.nsw.gov.au/prpoeoapp/</a>
LICENCE HOLDER	SUNSET POWER INTERNATIONAL PTY LTD	
REPORTING PERIOD	January 2025	
ADDRESS	VALES ROAD, MANNERING PARK NSW	

### Compliance Summary

Were all licence monitoring limits met this month?

No

Details of any licence monitoring limit not complied with this month if applicable:

EPL Point	Air/Water/Noise/Other	Pollutant	Value Measured	Licence Limit	Comments
EPA22	Water	Iron	0.32 (mg/L)	0.30 (mg/L)	Non-compliance has been reported to the EPA. The result was within the measurement uncertainty of analysis for Total Iron.

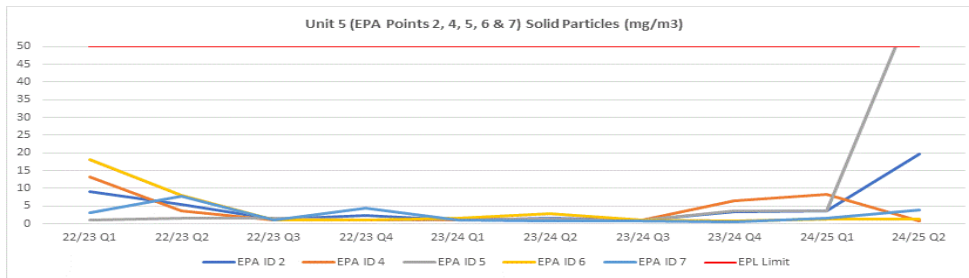
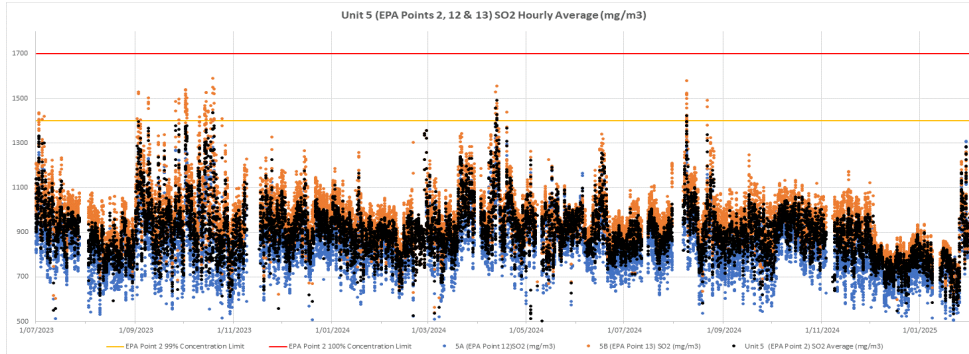
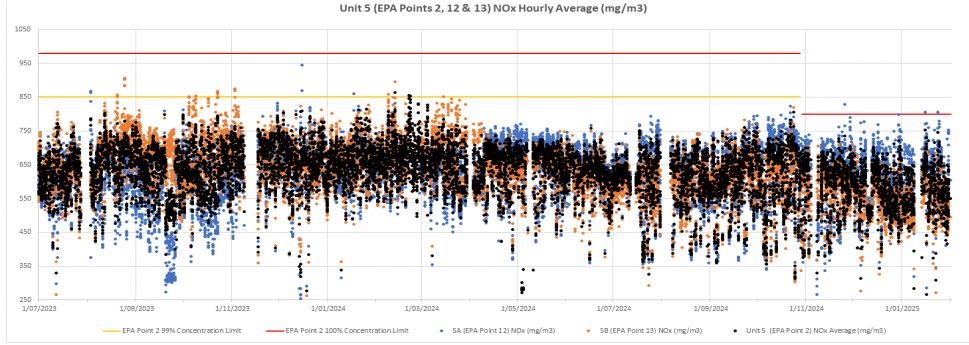
### Monitoring Locations

The location of Environment Protection Licence monitoring points within the Vales Point Power Station premises can be found at <https://www.de.com.au/environment/environmental-licences-and-monitoring> . Click the heading "Vales Point Licence Points" to open the pdf document.

**POINT 2 Combined air emissions from boiler 5 via Points 4 to 7 to Point 1 marked and shown as EPA ID 2 on The Plans ("VX837351-1 AND "VX837351-2" 03/06/2020 EPA REFERENCE DOC20/476695 AND DOC20/476695-1).**

Month	Pollutant	Unit of Measure	Sample/Measurement Frequency	Samples Collected & Analysed	Date Sampled	Lowest Sample Value	Mean of Samples	Highest Sample Value	99 Percentile Concentration Limit	100 Percentile Concentration Limit	Exceed 100% Limit (yes/no)	Comments
Jan-25	Cadmium	(mg/m3)	Every 6 months							0.2	No	
Jan-25	Chlorine	(mg/m3)	Every 6 months							20	No	
Jan-25	Fluorine	(mg/m3)	Every 6 months							30	No	
Jan-25	Hydrogen chloride	(mg/m3)	Every 6 months							50	No	
Jan-25	Mercury	(mg/m3)	Every 6 months							0.05	No	
Jan-25	Nitrogen Oxides	(mg/m3)	Continuous	96.4%	Jan-25	265	574	751		800	No	
Jan-25	Solid Particles	(mg/m3)	Quarterly	1	Dec-24	19.7	19.7	19.7		50	No	
Jan-25	Sulfur dioxide	(mg/m3)	Continuous	97.1%	Jan-25	531	790	1282	1400	1700	No	
Jan-25	Sulfuric acid mist and sulfur trioxide (as SO3)	(mg/m3)	Every 6 months							100	No	
Jan-25	Type 1 and Type 2 substances in aggregate	(mg/m3)	Every 6 months							0.75	No	
Jan-25	VOC's as n-propane equivalent	(mg/m3)	Every 6 months							10	No	

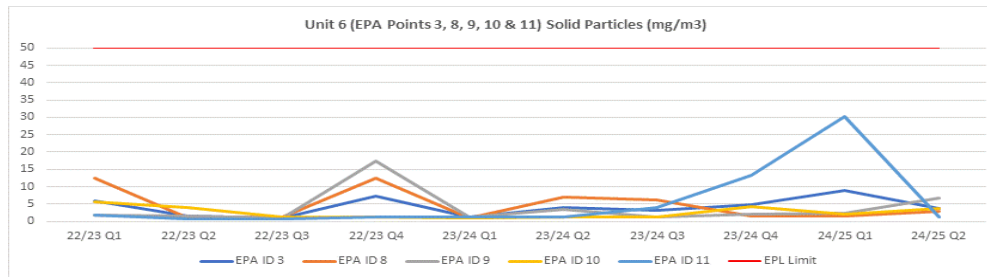
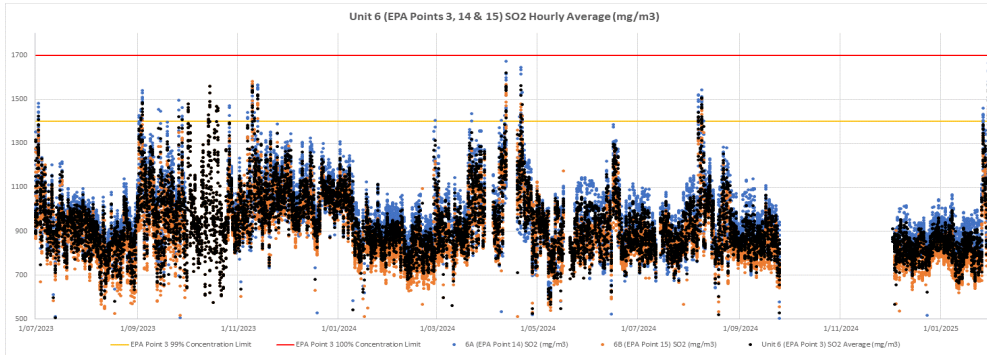
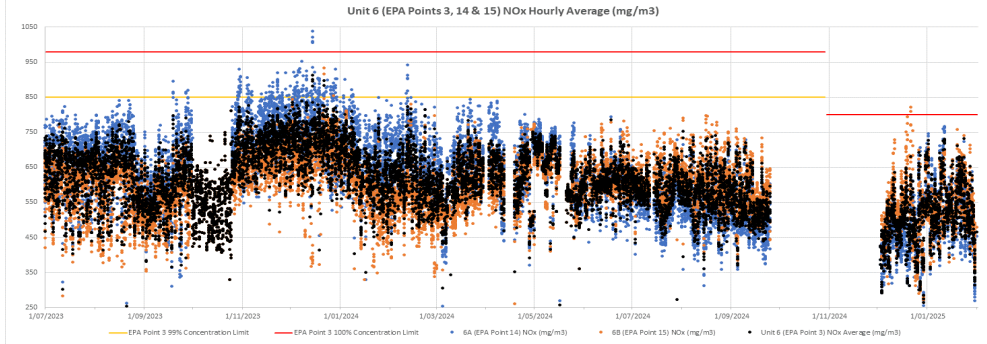
The 100% Concentration limits in the below graphs apply to EPA Point 2 only. EPA Point 2 is the combined emissions from EPA Points 12 & 13 for NOx and SO2 and EPA Points 4, 5, 6 & 7 for Particulates.



POINT 3 Combined air emissions from boiler 6 via Points 8 to 11 to Point 1 marked and shown as EPA ID 3 on The Plans ("VX837351-1 AND "VX837351-2" 03/06/2020 EPA REFERENCE DOC20/476695 AND DOC20/476695-1).

Month	Pollutant	Unit of Measure	Sample/Measurement Frequency	Samples Collected & Analysed	Date Sampled	Lowest Sample Value	Mean of Samples	Highest Sample Value	99 Percentile Concentration Limit	100 Percentile Concentration Limit	Exceed 100% Limit (yes/no)	Comments
Jan-25	Cadmium	(mg/m <sup>3</sup> )	Every 6 months							0.2	No	
Jan-25	Chlorine	(mg/m <sup>3</sup> )	Every 6 months							20	No	
Jan-25	Fluorine	(mg/m <sup>3</sup> )	Every 6 months							30	No	
Jan-25	Hydrogen chloride	(mg/m <sup>3</sup> )	Every 6 months							50	No	
Jan-25	Mercury	(mg/m <sup>3</sup> )	Every 6 months							0.05	No	
Jan-25	Nitrogen Oxides	(mg/m <sup>3</sup> )	Continuous	100.0%	Jan-25	312	534	731		800	No	
Jan-25	Solid Particles	(mg/m <sup>3</sup> )	Quarterly	1	Dec-24	3.69	3.69	3.69		50	No	
Jan-25	Sulfur dioxide	(mg/m <sup>3</sup> )	Continuous	100.0%	Jan-25	661	873	1565	1400	1700	No	
Jan-25	Sulfuric acid mist and sulfur trioxide (as SO <sub>3</sub> )	(mg/m <sup>3</sup> )	Every 6 months							100	No	
Jan-25	Type 1 and Type 2 substances in aggregate	(mg/m <sup>3</sup> )	Every 6 months							0.75	No	
Jan-25	VOC's as n-propane equivalent	(mg/m <sup>3</sup> )	Every 6 months							10	No	

The 100% Concentration limits in the below graphs apply to EPA Point 3 only. EPA Point 3 is the combined Emissions from EPA Points 14 & 15 for NOx and SO2 and EPA Points 8, 9, 10 & 11 for Particulates.



POINT 4 Boiler number 5 exhaust - duct A marked and shown as EPA ID 4 on The Plans ("VX837351-1 AND "VX837351-2" 03/06/2020 EPA REFERENCE DOC20/476695 AND DOC20/476695-1).

Month	Pollutant	Unit of Measure	Sample/Measurement Frequency	Samples Collected & Analysed	Date Sampled	Lowest Sample Value	Mean of Samples	Highest Sample Value	99 Percentile Concentration Limit	100 Percentile Concentration Limit	Exceedance (yes/no)	Comments
Jan-25	Cadmium	(mg/m3)	Every 6 months								N/A	
Jan-25	Carbon dioxide	(%)	Every 6 months								N/A	
Jan-25	Chlorine	(mg/m3)	Every 6 months								N/A	
Jan-25	Fluorine	(mg/m3)	Every 6 months								N/A	
Jan-25	Hydrogen chloride	(mg/m3)	Every 6 months								N/A	
Jan-25	Mercury	(mg/m3)	Every 6 months								N/A	
Jan-25	Solid Particles	(mg/m3)	Quarterly	1	Dec-24	<0.9	<0.9	<0.9			N/A	
Jan-25	Sulfuric acid mist and sulfur trioxide (as SO3)	(mg/m3)	Every 6 months								N/A	
Jan-25	Type 1 and Type 2 substances in aggregate	(mg/m3)	Every 6 months								N/A	
Jan-25	VOC's as n-propane equivalent	(mg/m3)	Every 6 months								N/A	

**POINT 5 Boiler number 5 exhaust - duct B marked and shown as EPA ID 5 on The Plans ("VX837351-1 AND "VX837351-2" 03/06/2020 EPA REFERENCE DOC20/476695 AND DOC20/476695-1).**

Month	Pollutant	Unit of Measure	Sample/Measurement Frequency	Samples Collected & Analysed	Date Sampled	Lowest Sample Value	Mean of Samples	Highest Sample Value	99 Percentile Concentration Limit	100 Percentile Concentration Limit	Exceedance (yes/no)	Comments
Jan-25	Cadmium	(mg/m3)	Every 6 months								N/A	
Jan-25	Mercury	(mg/m3)	Every 6 months								N/A	
Jan-25	Solid Particles	(mg/m3)	Quarterly	1	Dec-24	65.9	65.9	65.9			N/A	
Jan-25	Type 1 and Type 2 substances in aggregate	(mg/m3)	Every 6 months								N/A	

**POINT 6 Boiler number 5 exhaust - duct C marked and shown as EPA ID 6 on The Plans ("VX837351-1 AND "VX837351-2" 03/06/2020 EPA REFERENCE DOC20/476695 AND DOC20/476695-1).**

Month	Pollutant	Unit of Measure	Sample/Measurement Frequency	Samples Collected & Analysed	Date Sampled	Lowest Sample Value	Mean of Samples	Highest Sample Value	99 Percentile Concentration Limit	100 Percentile Concentration Limit	Exceedance (yes/no)	Comments
Jan-25	Cadmium	(mg/m3)	Every 6 months								N/A	
Jan-25	Carbon dioxide	(%)	Every 6 months								N/A	
Jan-25	Chlorine	(mg/m3)	Every 6 months								N/A	
Jan-25	Fluorine	(mg/m3)	Every 6 months								N/A	
Jan-25	Hydrogen chloride	(mg/m3)	Every 6 months								N/A	
Jan-25	Mercury	(mg/m3)	Every 6 months								N/A	
Jan-25	Solid Particles	(mg/m3)	Quarterly	1	Dec-24	1.4	1.4	1.4			N/A	
Jan-25	Sulfuric acid mist and sulfur trioxide (as SO3)	(mg/m3)	Every 6 months								N/A	
Jan-25	Type 1 and Type 2 substances in aggregate	(mg/m3)	Every 6 months								N/A	
Jan-25	VOC's as n-propane equivalent	(mg/m3)	Every 6 months								N/A	

**POINT 7 Boiler number 5 exhaust - duct D marked and shown as EPA ID 7 on The Plans ("VX837351-1 AND "VX837351-2" 03/06/2020 EPA REFERENCE DOC20/476695 AND DOC20/476695-1).**

Month	Pollutant	Unit of Measure	Sample/Measurement Frequency	Samples Collected & Analysed	Date Sampled	Lowest Sample Value	Mean of Samples	Highest Sample Value	99 Percentile Concentration Limit	100 Percentile Concentration Limit	Exceedance (yes/no)	Comments
Jan-25	Cadmium	(mg/m3)	Every 6 months								N/A	
Jan-25	Mercury	(mg/m3)	Every 6 months								N/A	
Jan-25	Solid Particles	(mg/m3)	Quarterly	1	Dec-24	3.9	3.9	3.9			N/A	
Jan-25	Type 1 and Type 2 substances in aggregate	(mg/m3)	Every 6 months								N/A	

**POINT 8 Boiler number 6 exhaust - duct A marked and shown as EPA ID 8 on The Plans ("VX837351-1 AND "VX837351-2" 03/06/2020 EPA REFERENCE DOC20/476695 AND DOC20/476695-1).**

Month	Pollutant	Unit of Measure	Sample/Measurement Frequency	Samples Collected & Analysed	Date Sampled	Lowest Sample Value	Mean of Samples	Highest Sample Value	99 Percentile Concentration Limit	100 Percentile Concentration Limit	Exceedance (yes/no)	Comments
Jan-25	Cadmium	(mg/m3)	Every 6 months								N/A	
Jan-25	Carbon dioxide	(%)	Every 6 months								N/A	
Jan-25	Chlorine	(mg/m3)	Every 6 months								N/A	
Jan-25	Fluorine	(mg/m3)	Every 6 months								N/A	
Jan-25	Hydrogen chloride	(mg/m3)	Every 6 months								N/A	
Jan-25	Mercury	(mg/m3)	Every 6 months								N/A	
Jan-25	Solid Particles	(mg/m3)	Quarterly	1	Dec-24	3.0	3.0	3.0			N/A	
Jan-25	Sulfuric acid mist and sulfur trioxide (as SO3)	(mg/m3)	Every 6 months								N/A	
Jan-25	Type 1 and Type 2 substances in aggregate	(mg/m3)	Every 6 months								N/A	
Jan-25	VOC's as n-propane equivalent	(mg/m3)	Every 6 months								N/A	

**POINT 9 Boiler number 6 exhaust - duct B marked and shown as EPA ID 9 on The Plans ("VX837351-1 AND "VX837351-2" 03/06/2020 EPA REFERENCE DOC20/476695 AND DOC20/476695-1).**

Month	Pollutant	Unit of Measure	Sample/Measurement Frequency	Samples Collected & Analysed	Date Sampled	Lowest Sample Value	Mean of Samples	Highest Sample Value	99 Percentile Concentration Limit	100 Percentile Concentration Limit	Exceedance (yes/no)	Comments
Jan-25	Cadmium	(mg/m3)	Every 6 months								N/A	
Jan-25	Mercury	(mg/m3)	Every 6 months								N/A	
Jan-25	Solid Particles	(mg/m3)	Quarterly	1	Dec-24	6.7	6.7	6.7			N/A	
Jan-25	Type 1 and Type 2 substances in aggregate	(mg/m3)	Every 6 months								N/A	

**POINT 10 Boiler number 6 exhaust - duct C marked and shown as EPA ID 10 on The Plans ("VX837351-1 AND "VX837351-2" 03/06/2020 EPA REFERENCE DOC20/476695 AND DOC20/476695-1).**

Month	Pollutant	Unit of Measure	Sample/Measurement Frequency	Samples Collected & Analysed	Date Sampled	Lowest Sample Value	Mean of Samples	Highest Sample Value	99 Percentile Concentration Limit	100 Percentile Concentration Limit	Exceedance (yes/no)	Comments
Jan-25	Cadmium	(mg/m3)	Every 6 months								N/A	
Jan-25	Carbon dioxide	(%)	Every 6 months								N/A	
Jan-25	Chlorine	(mg/m3)	Every 6 months								N/A	
Jan-25	Fluorine	(mg/m3)	Every 6 months								N/A	
Jan-25	Hydrogen chloride	(mg/m3)	Every 6 months								N/A	
Jan-25	Mercury	(mg/m3)	Every 6 months								N/A	
Jan-25	Solid Particles	(mg/m3)	Quarterly	1	Dec-24	3.8	3.8	3.8			N/A	
Jan-25	Sulfuric acid mist and sulfur trioxide (as SO3)	(mg/m3)	Every 6 months								N/A	
Jan-25	Type 1 and Type 2 substances in aggregate	(mg/m3)	Every 6 months								N/A	
Jan-25	VOC's as n-propane equivalent	(mg/m3)	Every 6 months								N/A	

**POINT 11 Boiler number 6 exhaust - duct D marked and shown as EPA ID 11 on The Plans ("VX837351-1 AND "VX837351-2" 03/06/2020 EPA REFERENCE DOC20/476695 AND DOC20/476695-1).**

Month	Pollutant	Unit of Measure	Sample/Measurement Frequency	Samples Collected & Analysed	Date Sampled	Lowest Sample Value	Mean of Samples	Highest Sample Value	99 Percentile Concentration Limit	100 Percentile Concentration Limit	Exceedance (yes/no)	Comments
Jan-25	Cadmium	(mg/m3)	Every 6 months								N/A	
Jan-25	Mercury	(mg/m3)	Every 6 months								N/A	
Jan-25	Solid Particles	(mg/m3)	Quarterly	1	Dec-24	<1.16	<1.16	<1.16			N/A	
Jan-25	Type 1 and Type 2 substances in aggregate	(mg/m3)	Every 6 months								N/A	

**POINT 12 Boiler number 5 combined exhaust - duct A and B (points 4 and 5) marked and shown as EPA ID 12 on The Plans ("VX837351-1 AND "VX837351-2" 03/06/2020 EPA REFERENCE DOC20/476695 AND DOC20/476695-1).**

Month	Pollutant	Unit of Measure	Sample/Measurement Frequency	Samples Collected & Analysed	Date Sampled	Lowest Sample Value	Mean of Samples	Highest Sample Value	99 Percentile Concentration Limit	100 Percentile Concentration Limit	Exceedance (yes/no)	Comments
Jan-25	Nitrogen Oxides	(mg/m3)	Continuous	95.3%	Jan-25	283	606	804			N/A	
Jan-25	Sulfur dioxide	(mg/m3)	Continuous	96.7%	Jan-25	463	755	1306			N/A	

**POINT 13 Boiler number 5 combined exhaust - duct C and D (points 6 and 7) marked and shown as EPA ID 13 on The Plans ("VX837351-1 AND "VX837351-2" 03/06/2020 EPA REFERENCE DOC20/476695 AND DOC20/476695-1).**

Month	Pollutant	Unit of Measure	Sample/Measurement Frequency	Samples Collected & Analysed	Date Sampled	Lowest Sample Value	Mean of Samples	Highest Sample Value	99 Percentile Concentration Limit	100 Percentile Concentration Limit	Exceedance (yes/no)	Comments
Jan-25	Nitrogen Oxides	(mg/m3)	Continuous	97.5%	Jan-25	246	542	698			N/A	
Jan-25	Sulfur dioxide	(mg/m3)	Continuous	97.5%	Jan-25	596	825	1258			N/A	

**POINT 14 Boiler number 6 combined exhaust - duct A and B (points 8 and 9) marked and shown as EPA ID 14 on The Plans ("VX837351-1 AND "VX837351-2" 03/06/2020 EPA REFERENCE DOC20/476695 AND DOC20/476695-1).**

Month	Pollutant	Unit of Measure	Sample/Measurement Frequency	Samples Collected & Analysed	Date Sampled	Lowest Sample Value	Mean of Samples	Highest Sample Value	99 Percentile Concentration Limit	100 Percentile Concentration Limit	Exceedance (yes/no)	Comments
Jan-25	Nitrogen Oxides	(mg/m3)	Continuous	100.0%	Jan-25	267	527	766			N/A	
Jan-25	Sulfur dioxide	(mg/m3)	Continuous	100.0%	Jan-25	686	929	1664			N/A	

**POINT 15 Boiler number 6 combined exhaust - duct C and D (points 10 and 11) marked and shown as EPA ID 12 on The Plans ("VX837351-1 AND "VX837351-2" 03/06/2020 EPA REFERENCE DOC20/476695 AND DOC20/476695-1).**

Month	Pollutant	Unit of Measure	Sample/Measurement Frequency	Samples Collected & Analysed	Date Sampled	Lowest Sample Value	Mean of Samples	Highest Sample Value	99 Percentile Concentration Limit	100 Percentile Concentration Limit	Exceedance (yes/no)	Comments
Jan-25	Nitrogen Oxides	(mg/m3)	Continuous	100.0%	Jan-25	353	541	756			N/A	
Jan-25	Sulfur dioxide	(mg/m3)	Continuous	100.0%	Jan-25	618	816	1466			N/A	

**POINT 22 Discharge of cooling water from the cooling water outlet canal to Wye Bay marked and shown as EPA ID 22 on The Plans ("VX837351-1 AND "VX837351-2" 03/06/2020 EPA REFERENCE DOC20/476695 AND DOC20/476695-1).**

Month	Pollutant	Unit of Measure	Sample/Measurement Frequency	Samples Collected & Analysed	Date Sampled	Lowest Sample Value	Mean of Samples	Highest Sample Value	98.5 Percentile Concentration Limit	100 Percentile Concentration Limit	Exceed 100% Limit (yes/no)	Comments
Jan-25	Chlorine (free residual)	(mg/L)	Monthly during discharge	1	8/01/2025	0	0	0		0.2	No	
Jan-25	Copper	(mg/L)	Monthly during discharge	1	8/01/2025	0.003	0.003	0.003		0.005	No	
Jan-25	Iron	(mg/L)	Monthly during discharge	1	8/01/2025	0.32	0.32	0.32		0.3	Yes	
Jan-25	Oil and Grease	Visible	Continuous during discharge	100%	Jan-25	NIL	NIL	NIL				
Jan-25	Selenium	(mg/L)	Monthly during discharge	1	8/01/2025	0.002	0.002	0.002		0.005	No	
Jan-25	Temperature	(°C)	Continuous during discharge	99.9%	Jan-25	22.7	30.9	35.5	35	37.5	No	

**POINT 23 Discharge of supernatant water from the ash dam to the cooling water outlet canal to Wye Bay marked and shown as EPA ID 23 on The Plans ("VX837351-1 AND "VX837351-2" 03/06/2020 EPA REFERENCE DOC20/476695 AND DOC20/476695-1).**

Month	Pollutant	Unit of Measure	Sample/Measurement Frequency	Samples Collected & Analysed	Date Sampled	Lowest Sample Value	Mean of Samples	Highest Sample Value	99 Percentile Concentration Limit	100 Percentile Concentration Limit	Exceedance (yes/no)	Comments
Jan-25	Aluminium	(mg/L)	Monthly during discharge	1	8/01/2025	0.07	0.07	0.07				
Jan-25	Ammonia	(mg/L)	Monthly during discharge	1	8/01/2025	0.070	0.070	0.070				
Jan-25	Arsenic (III)	(mg/L)	Monthly during discharge	1	8/01/2025	<0.001	<0.001	<0.001				
Jan-25	Arsenic (V)	(mg/L)	Monthly during discharge	1	8/01/2025	0.16	0.16	0.16				
Jan-25	Cadmium	(mg/L)	Monthly during discharge	1	8/01/2025	<0.0001	<0.0001	<0.0001				
Jan-25	Chromium (trivalent)	(mg/L)	Monthly during discharge	1	8/01/2025	0.007	0.007	0.007				
Jan-25	Chromium (VI) Compounds	(mg/L)	Monthly during discharge	1	8/01/2025	0.01	0.01	0.01				
Jan-25	Copper	(mg/L)	Monthly during discharge	1	8/01/2025	0.004	0.004	0.004				
Jan-25	Iron	(mg/L)	Monthly during discharge	1	8/01/2025	0.20	0.20	0.20				
Jan-25	Lead	(mg/L)	Monthly during discharge	1	8/01/2025	<0.001	<0.001	<0.001				
Jan-25	Manganese	(mg/L)	Monthly during discharge	1	8/01/2025	0.006	0.006	0.006				
Jan-25	Nickel	(mg/L)	Monthly during discharge	1	8/01/2025	0.008	0.008	0.008				
Jan-25	Nitrate + nitrite (oxidised nitrogen)	(mg/L)	Monthly during discharge	1	8/01/2025	0.058	0.058	0.058				
Jan-25	Nitrogen	(mg/L)	Monthly during discharge	1	8/01/2025	0.3	0.3	0.3				
Jan-25	pH	pH	Monthly during discharge	1	8/01/2025	9.01	9.01	9.01		6.5 - 9.5	No	
Jan-25	Phosphorus	(mg/L)	Monthly during discharge	1	8/01/2025	0.1	0.1	0.1				
Jan-25	Reactive Phosphorus	(mg/L)	Monthly during discharge	1	8/01/2025	0.06	0.06	0.06				
Jan-25	Selenium	(mg/L)	Monthly during discharge	1	8/01/2025	0.048	0.048	0.048				
Jan-25	Total Kjeldahl Nitrogen	(mg/L)	Monthly during discharge	1	8/01/2025	1.0	1.0	1.0				
Jan-25	Total Suspended Solids	(mg/L)	Monthly during discharge	1	8/01/2025	13	13	13		50	No	
Jan-25	Vanadium	(mg/L)	Monthly during discharge	1	8/01/2025	0.13	0.13	0.13				
Jan-25	Zinc	(mg/L)	Monthly during discharge	1	8/01/2025	0.024	0.024	0.024				

**POINT 24 Discharge of seepage water from the ash dam rehabilitation area to Mannering Bay marked and shown as EPA ID 24 on The Plans ("VX837351-1 AND "VX837351-2" 03/06/2020 EPA REFERENCE DOC20/476695 AND DOC20/476695-1).**

Month	Pollutant	Unit of Measure	Sample/Measurement Frequency	Samples Collected & Analysed	Date Sampled	Lowest Sample Value	Mean of Samples	Highest Sample Value	Discharge (yes/no)	100 Percentile Concentration Limit	Exceedance (yes/no)	Comments
Jan-25	Aluminium	(mg/L)	Monthly during discharge	1	8/01/2025	0.08	0.08	0.08	Yes			
Jan-25	Ammonia	(mg/L)	Monthly during discharge	1	8/01/2025	1.40	1.40	1.40	Yes			
Jan-25	Arsenic (III)	(mg/L)	Monthly during discharge	1	8/01/2025	<0.001	<0.001	<0.001	Yes			
Jan-25	Arsenic (V)	(mg/L)	Monthly during discharge	1	8/01/2025	0.002	0.002	0.002	Yes			
Jan-25	Cadmium	(mg/L)	Monthly during discharge	1	8/01/2025	<0.0001	<0.0001	<0.0001	Yes			
Jan-25	Chromium (trivalent)	(mg/L)	Monthly during discharge	1	8/01/2025	<0.005	<0.005	<0.005	Yes			
Jan-25	Chromium (VI) Compounds	(mg/L)	Monthly during discharge	1	8/01/2025	<0.005	<0.005	<0.005	Yes			
Jan-25	Copper	(mg/L)	Monthly during discharge	1	8/01/2025	<0.001	<0.001	<0.001	Yes			
Jan-25	Iron	(mg/L)	Monthly during discharge	1	8/01/2025	0.12	0.12	0.12	Yes			
Jan-25	Lead	(mg/L)	Monthly during discharge	1	8/01/2025	<0.001	<0.001	<0.001	Yes			
Jan-25	Manganese	(mg/L)	Monthly during discharge	1	8/01/2025	<0.001	<0.001	<0.001	Yes			
Jan-25	Nickel	(mg/L)	Monthly during discharge	1	8/01/2025	<0.001	<0.001	<0.001	Yes			
Jan-25	Nitrate + nitrite (oxidised nitrogen)	(mg/L)	Monthly during discharge	1	8/01/2025	0.38	0.38	0.38	Yes			
Jan-25	Nitrogen	(mg/L)	Monthly during discharge	1	8/01/2025	1.10	1.10	1.10	Yes			
Jan-25	pH	pH	Monthly during discharge	1	8/01/2025	8.23	8.23	8.23	Yes	6.5 - 9.5	No	
Jan-25	Phosphorus	(mg/L)	Monthly during discharge	1	8/01/2025	<0.05	<0.05	<0.05	Yes			
Jan-25	Reactive Phosphorus	(mg/L)	Monthly during discharge	1	8/01/2025	0.008	0.008	0.008	Yes			
Jan-25	Selenium	(mg/L)	Monthly during discharge	1	8/01/2025	0.001	0.001	0.001	Yes			
Jan-25	Total Kjeldahl Nitrogen	(mg/L)	Monthly during discharge	1	8/01/2025	0.80	0.80	0.80	Yes			
Jan-25	Total Suspended Solids	(mg/L)	Monthly during discharge	1	8/01/2025	10	10	10	Yes	50	No	
Jan-25	Vanadium	(mg/L)	Monthly during discharge	1	8/01/2025	0.01	0.01	0.01	Yes			
Jan-25	Zinc	(mg/L)	Monthly during discharge	1	8/01/2025	0.010	0.010	0.010	Yes			

**POINT 25 Discharge of over boarded water from the ash dam to Mannering Bay marked and shown as EPA ID 25 on The Plans ("VX837351-1 AND "VX837351-2" 03/06/2020 EPA REFERENCE DOC20/476695 AND DOC20/476695-1).**

Month	Pollutant	Unit of Measure	Sample/Measurement Frequency	Samples Collected & Analysed	Date Sampled	Lowest Sample Value	Mean of Samples	Highest Sample Value	Discharge (yes/no)	100 Percentile Concentration Limit	Exceedance (yes/no)	Comments
Jan-25	Aluminium	(mg/L)	Daily for any discharge >2 hrs						No			
Jan-25	Ammonia	(mg/L)	Daily for any discharge >2 hrs						No			
Jan-25	Arsenic (III)	(mg/L)	Daily for any discharge >2 hrs						No			
Jan-25	Arsenic (V)	(mg/L)	Daily for any discharge >2 hrs						No			
Jan-25	Cadmium	(mg/L)	Daily for any discharge >2 hrs						No			
Jan-25	Chromium (trivalent)	(mg/L)	Daily for any discharge >2 hrs						No			
Jan-25	Chromium (VI) Compounds	(mg/L)	Daily for any discharge >2 hrs						No			
Jan-25	Copper	(mg/L)	Daily for any discharge >2 hrs						No			
Jan-25	Iron	(mg/L)	Daily for any discharge >2 hrs						No			
Jan-25	Lead	(mg/L)	Daily for any discharge >2 hrs						No			
Jan-25	Manganese	(mg/L)	Daily for any discharge >2 hrs						No			
Jan-25	Nickel	(mg/L)	Daily for any discharge >2 hrs						No			No discharge from EPA Point 25 during January 2025
Jan-25	Nitrate + nitrite (oxidised nitrogen)	(mg/L)	Daily for any discharge >2 hrs						No			
Jan-25	Nitrogen	(mg/L)	Daily for any discharge >2 hrs						No			
Jan-25	pH	pH	Daily for any discharge >2 hrs						No	6.5 - 9.5		
Jan-25	Phosphorus	(mg/L)	Daily for any discharge >2 hrs						No			
Jan-25	Reactive Phosphorus	(mg/L)	Daily for any discharge >2 hrs						No			
Jan-25	Selenium	(mg/L)	Daily for any discharge >2 hrs						No			
Jan-25	Total Kjeldahl Nitrogen	(mg/L)	Daily for any discharge >2 hrs						No			
Jan-25	Total Suspended Solids	(mg/L)	Daily for any discharge >2 hrs						No	50		
Jan-25	Vanadium	(mg/L)	Daily for any discharge >2 hrs						No			
Jan-25	Zinc	(mg/L)	Daily for any discharge >2 hrs						No			



**POINT 30** Groundwater quality monitoring bore marked and shown as EPA ID 30 on The Plans ("VX837351-1 AND "VX837351-2" 03/06/2020 EPA REFERENCE DOC20/476695 AND DOC20/476695-1).

Month	Pollutant	Unit of Measure	Sample/Measurement Frequency	Samples Collected & Analysed	Date Sampled	Lowest Sample Value	Mean of Samples	Highest Sample Value	99 Percentile Concentration Limit	100 Percentile Concentration Limit	Exceedance (yes/no)	Comments
Jan-25	Aluminium	(mg/L)	Quarterly	1	8/01/2025	0.77	0.77	0.77				
Jan-25	Ammonia	(mg/L)	Quarterly	1	8/01/2025	4.4	4.4	4.4				
Jan-25	Arsenic (III)	(mg/L)	Quarterly	1	8/01/2025	0.003	0.003	0.003				
Jan-25	Arsenic (V)	(mg/L)	Quarterly	1	8/01/2025	0.002	0.002	0.002				
Jan-25	Cadmium	(mg/L)	Quarterly	1	8/01/2025	<0.0001	<0.0001	<0.0001				
Jan-25	Chromium (trivalent)	(mg/L)	Quarterly	1	8/01/2025	<0.005	<0.005	<0.005				
Jan-25	Chromium (VI) Compounds	(mg/L)	Quarterly	1	8/01/2025	<0.005	<0.005	<0.005				
Jan-25	Copper	(mg/L)	Quarterly	1	8/01/2025	0.007	0.007	0.007				
Jan-25	Electrical Conductivity	(us/cm)	Quarterly	1	8/01/2025	31593	31593	31593				
Jan-25	Iron	(mg/L)	Quarterly	1	8/01/2025	73.0	73.0	73.0				
Jan-25	Lead	(mg/L)	Quarterly	1	8/01/2025	0.004	0.004	0.004				
Jan-25	Magnesium	(mg/L)	Quarterly	1	8/01/2025	840	840	840				
Jan-25	Manganese	(mg/L)	Quarterly	1	8/01/2025	4.6	4.6	4.6				
Jan-25	Nickel	(mg/L)	Quarterly	1	8/01/2025	0.027	0.027	0.027				
Jan-25	pH	pH	Quarterly	1	8/01/2025	5.13	5.13	5.13				
Jan-25	Potassium	(mg/L)	Quarterly	1	8/01/2025	110	110	110				
Jan-25	Selenium	(mg/L)	Quarterly	1	8/01/2025	<0.001	<0.001	<0.001				
Jan-25	Sodium	(mg/L)	Quarterly	1	8/01/2025	6500	6500	6500				
Jan-25	Standing Water Level	(m)	Quarterly	1	8/01/2025	3.92	3.92	3.92				
Jan-25	Vanadium	(mg/L)	Quarterly	1	8/01/2025	0.006	0.006	0.006				
Jan-25	Zinc	(mg/L)	Quarterly	1	8/01/2025	0.019	0.019	0.019				

**POINT 31** Groundwater quality monitoring bore marked and shown as EPA ID 31 on The Plans ("VX837351-1 AND "VX837351-2" 03/06/2020 EPA REFERENCE DOC20/476695 AND DOC20/476695-1).

Month	Pollutant	Unit of Measure	Sample/Measurement Frequency	Samples Collected & Analysed	Date Sampled	Lowest Sample Value	Mean of Samples	Highest Sample Value	99 Percentile Concentration Limit	100 Percentile Concentration Limit	Exceedance (yes/no)	Comments
Jan-25	Aluminium	(mg/L)	Quarterly	1	8/01/2025	0.88	0.88	0.88				
Jan-25	Ammonia	(mg/L)	Quarterly	1	8/01/2025	0.79	0.79	0.79				
Jan-25	Arsenic (III)	(mg/L)	Quarterly	1	8/01/2025	0.003	0.003	0.003				
Jan-25	Arsenic (V)	(mg/L)	Quarterly	1	8/01/2025	<0.001	<0.001	<0.001				
Jan-25	Cadmium	(mg/L)	Quarterly	1	8/01/2025	<0.0001	<0.0001	<0.0001				
Jan-25	Chromium (trivalent)	(mg/L)	Quarterly	1	8/01/2025	<0.005	<0.005	<0.005				
Jan-25	Chromium (VI) Compounds	(mg/L)	Quarterly	1	8/01/2025	<0.005	<0.005	<0.005				
Jan-25	Copper	(mg/L)	Quarterly	1	8/01/2025	0.013	0.013	0.013				
Jan-25	Electrical Conductivity	(us/cm)	Quarterly	1	8/01/2025	21488	21488	21488				
Jan-25	Iron	(mg/L)	Quarterly	1	8/01/2025	190	190	190				
Jan-25	Lead	(mg/L)	Quarterly	1	8/01/2025	0.006	0.006	0.006				
Jan-25	Magnesium	(mg/L)	Quarterly	1	8/01/2025	650	650	650				
Jan-25	Manganese	(mg/L)	Quarterly	1	8/01/2025	2.6	2.6	2.6				
Jan-25	Nickel	(mg/L)	Quarterly	1	8/01/2025	0.077	0.077	0.077				
Jan-25	pH	pH	Quarterly	1	8/01/2025	5.57	5.57	5.57				
Jan-25	Potassium	(mg/L)	Quarterly	1	8/01/2025	39.0	39.0	39.0				
Jan-25	Selenium	(mg/L)	Quarterly	1	8/01/2025	0.004	0.004	0.004				
Jan-25	Sodium	(mg/L)	Quarterly	1	8/01/2025	4000	4000	4000				
Jan-25	Standing Water Level	(m)	Quarterly	1	8/01/2025	1.73	1.73	1.73				
Jan-25	Vanadium	(mg/L)	Quarterly	1	8/01/2025	0.003	0.003	0.003				
Jan-25	Zinc	(mg/L)	Quarterly	1	8/01/2025	0.29	0.29	0.29				

**POINT 32** Groundwater quality monitoring bore marked and shown as EPA ID 32 on The Plans ("VX837351-1 AND "VX837351-2" 03/06/2020 EPA REFERENCE DOC20/476695 AND DOC20/476695-1).

Month	Pollutant	Unit of Measure	Sample/Measurement Frequency	Samples Collected & Analysed	Date Sampled	Lowest Sample Value	Mean of Samples	Highest Sample Value	99 Percentile Concentration Limit	100 Percentile Concentration Limit	Exceedance (yes/no)	Comments
Jan-25	Aluminium	(mg/L)	Quarterly	1	8/01/2025	2.60	2.60	2.60				
Jan-25	Ammonia	(mg/L)	Quarterly	1	8/01/2025	0.08	0.08	0.08				
Jan-25	Arsenic (III)	(mg/L)	Quarterly	1	8/01/2025	<0.001	<0.001	<0.001				
Jan-25	Arsenic (V)	(mg/L)	Quarterly	1	8/01/2025	<0.001	<0.001	<0.001				
Jan-25	Cadmium	(mg/L)	Quarterly	1	8/01/2025	<0.0001	<0.0001	<0.0001				
Jan-25	Chromium (trivalent)	(mg/L)	Quarterly	1	8/01/2025	<0.005	<0.005	<0.005				
Jan-25	Chromium (VI) Compounds	(mg/L)	Quarterly	1	8/01/2025	<0.005	<0.005	<0.005				
Jan-25	Copper	(mg/L)	Quarterly	1	8/01/2025	0.005	0.005	0.005				
Jan-25	Electrical Conductivity	(us/cm)	Quarterly	1	8/01/2025	1238	1238	1238				
Jan-25	Iron	(mg/L)	Quarterly	1	8/01/2025	14	14	14				
Jan-25	Lead	(mg/L)	Quarterly	1	8/01/2025	0.003	0.003	0.003				
Jan-25	Magnesium	(mg/L)	Quarterly	1	8/01/2025	19	19	19				
Jan-25	Manganese	(mg/L)	Quarterly	1	8/01/2025	0.190	0.190	0.190				
Jan-25	Nickel	(mg/L)	Quarterly	1	8/01/2025	0.012	0.012	0.012				
Jan-25	pH	pH	Quarterly	1	8/01/2025	6.24	6.24	6.24				
Jan-25	Potassium	(mg/L)	Quarterly	1	8/01/2025	4.0	4.0	4.0				
Jan-25	Selenium	(mg/L)	Quarterly	1	8/01/2025	<0.001	<0.001	<0.001				
Jan-25	Sodium	(mg/L)	Quarterly	1	8/01/2025	230	230	230				
Jan-25	Standing Water Level	(m)	Quarterly	1	8/01/2025	3.93	3.93	3.93				
Jan-25	Vanadium	(mg/L)	Quarterly	1	8/01/2025	0.003	0.003	0.003				
Jan-25	Zinc	(mg/L)	Quarterly	1	8/01/2025	0.034	0.034	0.034				

**POINT 33** Groundwater quality monitoring bore marked and shown as EPA ID 33 on The Plans ("VX837351-1 AND "VX837351-2" 03/06/2020 EPA REFERENCE DOC20/476695 AND DOC20/476695-1).

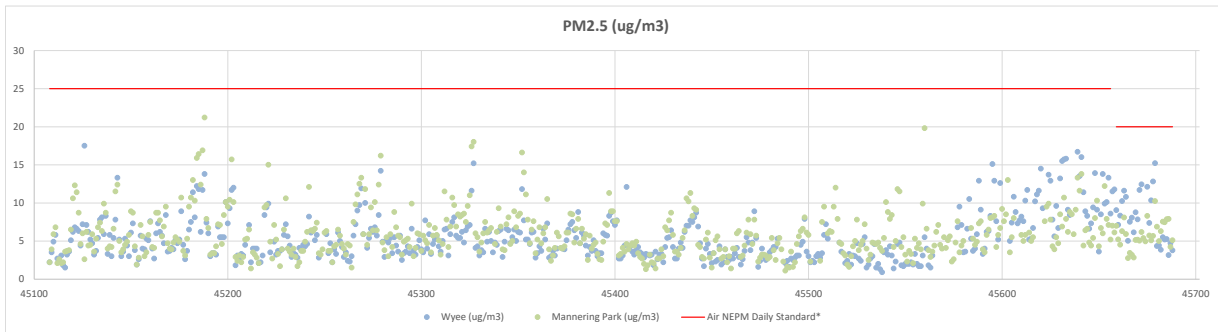
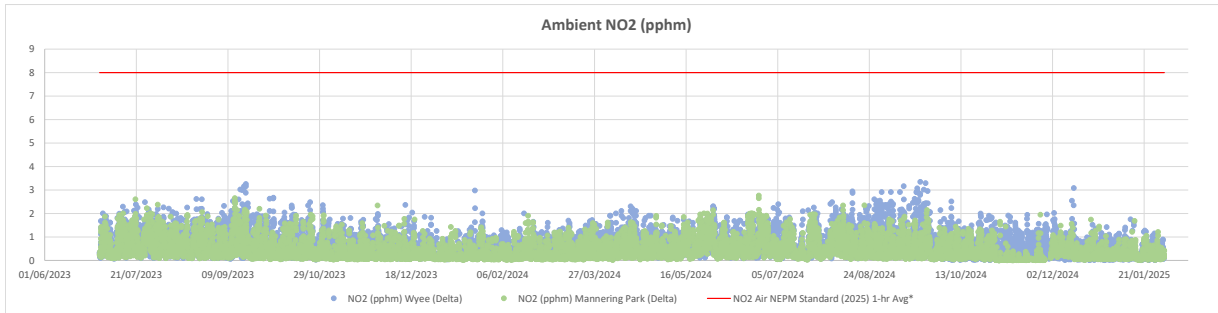
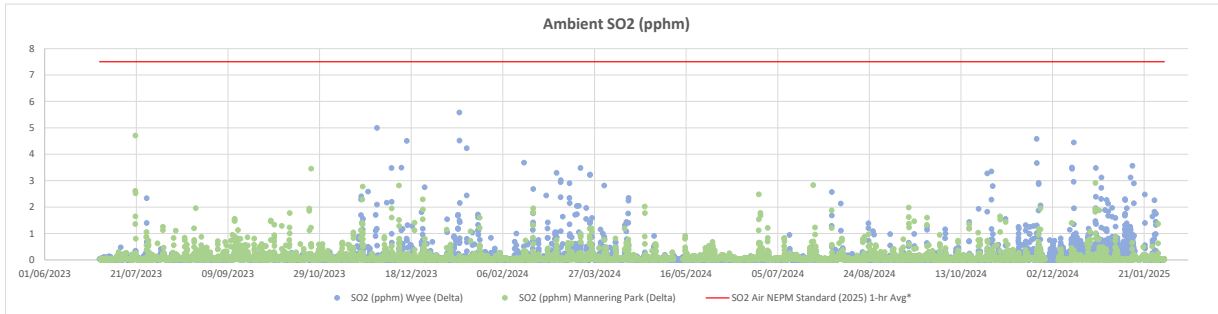
Month	Pollutant	Unit of Measure	Sample/Measurement Frequency	Samples Collected & Analysed	Date Sampled	Lowest Sample Value	Mean of Samples	Highest Sample Value	99 Percentile Concentration Limit	100 Percentile Concentration Limit	Exceedance (yes/no)	Comments
Jan-25	Aluminium	(mg/L)	Quarterly	1	8/01/2025	1.80	1.80	1.80				
Jan-25	Ammonia	(mg/L)	Quarterly	1	8/01/2025	0.05	0.05	0.05				
Jan-25	Arsenic (III)	(mg/L)	Quarterly	1	8/01/2025	<0.001	<0.001	<0.001				
Jan-25	Arsenic (V)	(mg/L)	Quarterly	1	8/01/2025	<0.001	<0.001	<0.001				
Jan-25	Cadmium	(mg/L)	Quarterly	1	8/01/2025	0.0001	0.0001	0.0001				
Jan-25	Chromium (trivalent)	(mg/L)	Quarterly	1	8/01/2025	<0.005	<0.005	<0.005				
Jan-25	Chromium (VI) Compounds	(mg/L)	Quarterly	1	8/01/2025	<0.005	<0.005	<0.005				
Jan-25	Copper	(mg/L)	Quarterly	1	8/01/2025	0.003	0.003	0.003				
Jan-25	Electrical Conductivity	(us/cm)	Quarterly	1	8/01/2025	47562	47562	47562				
Jan-25	Iron	(mg/L)	Quarterly	1	8/01/2025	47	47	47				
Jan-25	Lead	(mg/L)	Quarterly	1	8/01/2025	0.002	0.002	0.002				
Jan-25	Magnesium	(mg/L)	Quarterly	1	8/01/2025	1500	1500	1500				
Jan-25	Manganese	(mg/L)	Quarterly	1	8/01/2025	0.35	0.35	0.35				
Jan-25	Nickel	(mg/L)	Quarterly	1	8/01/2025	0.003	0.003	0.003				
Jan-25	pH	pH	Quarterly	1	8/01/2025	6.75	6.75	6.75				
Jan-25	Potassium	(mg/L)	Quarterly	1	8/01/2025	390	390	390				
Jan-25	Selenium	(mg/L)	Quarterly	1	8/01/2025	<0.001	<0.001	<0.001				
Jan-25	Sodium	(mg/L)	Quarterly	1	8/01/2025	11000	11000	11000				
Jan-25	Standing Water Level	(m)	Quarterly	1	8/01/2025	0.48	0.48	0.48				
Jan-25	Vanadium	(mg/L)	Quarterly	1	8/01/2025	0.008	0.008	0.008				
Jan-25	Zinc	(mg/L)	Quarterly	1	8/01/2025	0.060	0.060	0.060				

POINT 34 Groundwater quality monitoring bore marked and shown as EPA ID 33 on The Plans ("VX837351-1 AND "VX837351-2" 03/06/2020 EPA REFERENCE DOC20/476695 AND DOC20/476695-1).

Month	Pollutant	Unit of Measure	Sample/Measurement Frequency	Samples Collected & Analysed	Date Sampled	Lowest Sample Value	Mean of Samples	Highest Sample Value	99 Percentile Concentration Limit	100 Percentile Concentration Limit	Exceedance (yes/no)	Comments
Jan-25	Aluminium	(mg/L)	Quarterly	1	8/01/2025	1.8	1.8	1.8				
Jan-25	Ammonia	(mg/L)	Quarterly	1	8/01/2025	0.054	0.054	0.054				
Jan-25	Arsenic (III)	(mg/L)	Quarterly	1	8/01/2025	<0.001	<0.001	<0.001				
Jan-25	Arsenic (V)	(mg/L)	Quarterly	1	8/01/2025	<0.001	<0.001	<0.001				
Jan-25	Cadmium	(mg/L)	Quarterly	1	8/01/2025	0.00010	0.00010	0.00010				
Jan-25	Chromium (trivalent)	(mg/L)	Quarterly	1	8/01/2025	<0.005	<0.005	<0.005				
Jan-25	Chromium (VI) Compounds	(mg/L)	Quarterly	1	8/01/2025	<0.005	<0.005	<0.005				
Jan-25	Copper	(mg/L)	Quarterly	1	8/01/2025	0.003	0.003	0.003				
Jan-25	Electrical Conductivity	(us/cm)	Quarterly	1	8/01/2025	47562	47562	47562				
Jan-25	Iron	(mg/L)	Quarterly	1	8/01/2025	47.0	47.0	47.0				
Jan-25	Lead	(mg/L)	Quarterly	1	8/01/2025	0.002	0.002	0.002				
Jan-25	Magnesium	(mg/L)	Quarterly	1	8/01/2025	1500.0	1500.0	1500.0				
Jan-25	Manganese	(mg/L)	Quarterly	1	8/01/2025	0.350	0.350	0.350				
Jan-25	Nickel	(mg/L)	Quarterly	1	8/01/2025	0.003	0.003	0.003				
Jan-25	pH	pH	Quarterly	1	8/01/2025	6.75	6.75	6.75				
Jan-25	Potassium	(mg/L)	Quarterly	1	8/01/2025	390	390	390				
Jan-25	Selenium	(mg/L)	Quarterly	1	8/01/2025	<0.001	<0.001	<0.001				
Jan-25	Sodium	(mg/L)	Quarterly	1	8/01/2025	11000	11000	11000				
Jan-25	Standing Water Level	(m)	Quarterly	1	8/01/2025	0.48	0.48	0.48				
Jan-25	Vanadium	(mg/L)	Quarterly	1	8/01/2025	0.008	0.008	0.008				
Jan-25	Zinc	(mg/L)	Quarterly	1	8/01/2025	0.060	0.060	0.060				

## Ambient Air Quality Graphs

POINTS 16 & 35 Meteorological and ambient air quality monitoring stations at Wye & Mannering Park marked and shown as EPA ID 16 & EPA ID 35 respectively on The Plan.



### GENERAL COMMENTS

\*For more information about the Australian Governments National Environment Protection (Ambient Air Quality) Measure (Air NEPM) visit <<https://www.nepc.gov.au/nepms/ambient-air-quality>>.  
 changed from 25ug/m<sup>3</sup> to 20ug/m<sup>3</sup> in 2025. This reduction is reflected in the PM<sub>2.5</sub> graph above.

\*\*The Air NEPM daily standard for PM<sub>2.5</sub>