



Western Community Reference Group – Presentations

Ash placement proposal

Water management update

17 November 2009

Stephen Saladine
General Manager Production

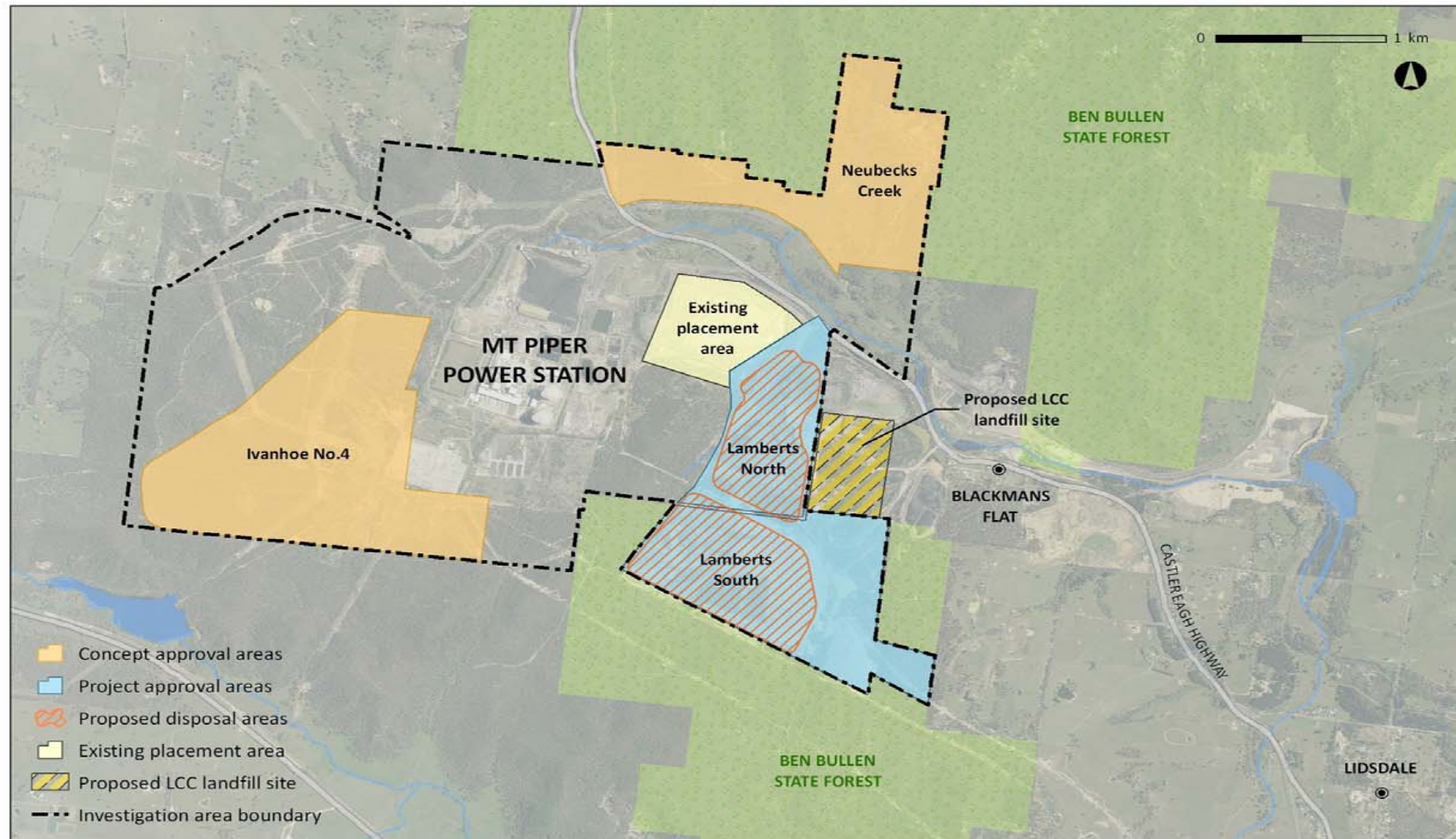


Proposal

- Major project application and Preliminary Environmental Assessment lodged with Department of Planning
- Seeking concept approval for four new ash placement areas – Lamberts North and Lamberts South; Neubeck's Creek and Ivanhoe No.4
- Also seeking approval to immediately develop two areas – Lamberts North and Lamberts South.

Map of proposed Mt Piper ash placement areas

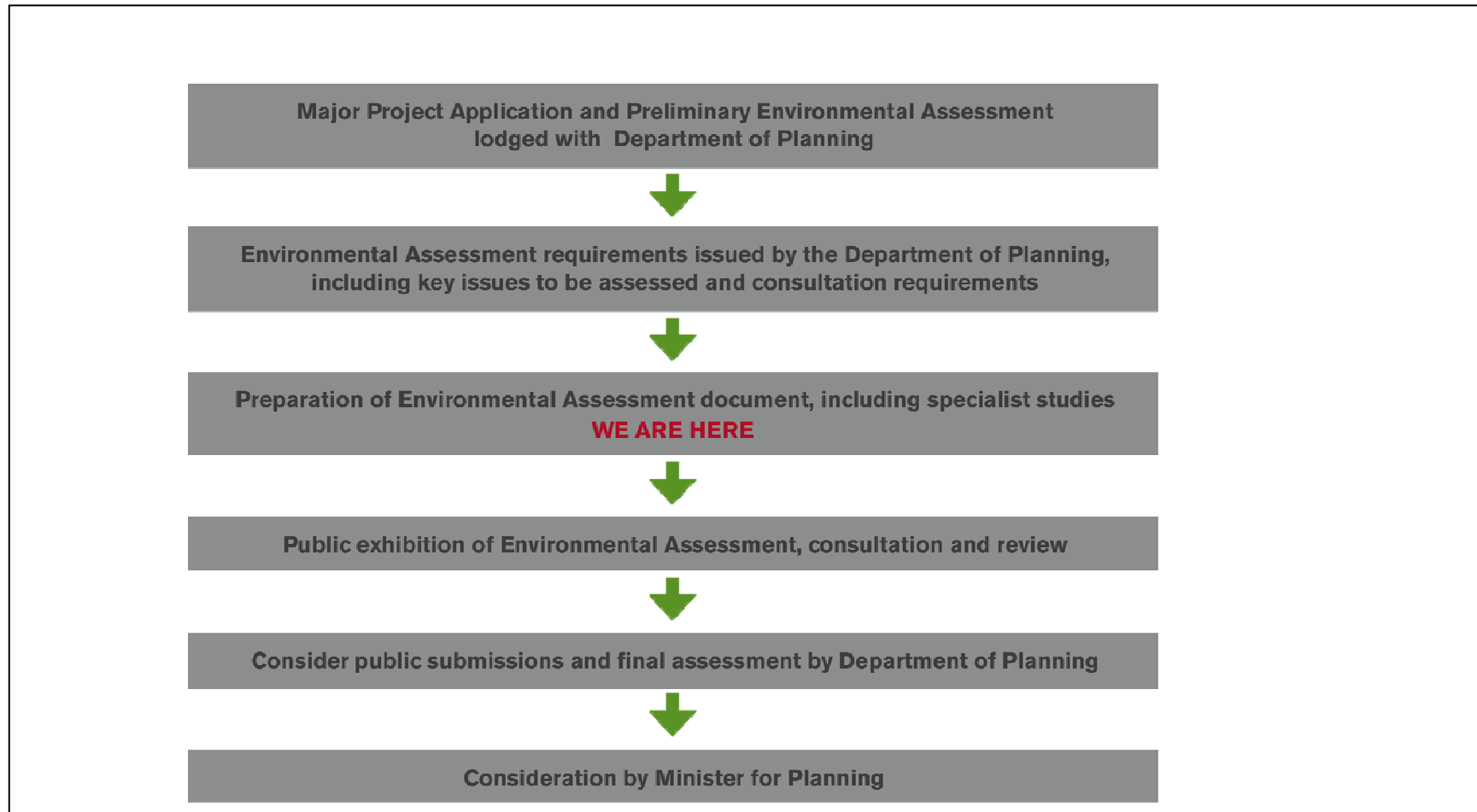
Proposed ash placement areas at Mt Piper Power Station



Background details

- Current placement area will be filled by 2015.
- New areas required to allow existing power station to continue to operate.
- To date more than 10.1 million tonnes has been placed in an open cut mine void.
- About 200,000 tonnes per annum (about 18%) is sold for re-use – continually trying to find new reuse options.
- Revegetation of ash placement will be undertaken progressively.
- Current hours of operation remain unchanged.

Ash placement - approval process



Oberon Dam water update

- Fish River quality water is needed for the two Wallerawang units (1,000 MW total)
- The units require “high quality” water (water with low saline content) for the demineraliser plant.
- State Water has granted an annual allocation from the Fish River to Delta and other Fish River customers.
- The volume of water withdrawn by Delta varies from one month to the next - more water required during high summer demand and less in winter.
- When sufficient environmental flows are assured, allocation can be sourced from Duckmaloi as well as Oberon Dam.
- Delta stays within its annual allocation.



Delta allocation depends on dam capacity

Oberon Dam Capacity	Allocation ML/annum	%
100%	8184	100%
60%	8184	100%
50%	6540	80%
40%	6540	70%
25%	5724	70%
20%	4908	60%
15%	3276	40%
10%	2616	32%
8%	324	4%



Initiatives to reduce Oberon Dam water use

- One unit out of service from mid-December to the end of February.
- Second Wallerawang unit out of service from Christmas Eve '09 to early January '10.
- Tendering for a reverse osmosis (RO) plant at Wallerawang to process Coxs River water to reduce current high reliance on drought impacted Fish River scheme.
- Sourcing alternative sources of water, such as from Duckmaloi River ensuring environmental flows are not impacted.
- Delta voluntarily reverted to previous allocation rule of minimum allocation from Oberon Dam at 8% of capacity. (*Note: an independent review had proposed that minimum be reached should dam drop to 5% of capacity.*)